

# All you need to know about coverage changes

## What if I'm already covered?

### Reasons to stick with your student Plan:

- Your parent's insurance plan could stop covering you completely if you're a student over 21.
- You can combine plans to maximize your overall coverage—up to 100%.

## When can I change my coverage?

**Fall semester** (enrolments and opt outs):  
Aug. 3 – Sept. 30, 2021

**Winter semester** (enrolments and opt outs for new students only):  
Jan. 3 – 31, 2022

## Family enrolments

You can enrol your family (spouse and/or dependent children) each year by paying an additional fee, over and above your fee as a member of the Plan. Common law couples are eligible. Visit [www.studentcare.ca/uwsa](http://www.studentcare.ca/uwsa) for instructions.

**+1** Add one dependant for  
**\$293.72**  
for full-year coverage\*

**∞** Add unlimited dependants for  
**\$587.44**  
for full-year coverage\*

\*Family enrolment fees for coverage from Jan. 1 – Aug. 31, 2022 for new Winter semester students are available online.

## Opting out

1. Use the secure online opt-out processing system at [www.studentcare.ca/uwsa](http://www.studentcare.ca/uwsa) to opt out of the health portion, the dental portion, or the Plan in its entirety.
2. Upload proof of your alternative health and/or dental coverage (such as a copy of your benefits card or a letter from your parent's or spouse's employer). Provincial health care is not considered acceptable alternative coverage.
3. Receive an email money transfer or a direct deposit into your account for the amount of the Plan shortly after the Change-of-Coverage Period.

# The ease of claiming at your fingertips

Search **Studentcare mobile** on the **App Store** or **Google Play**, and use the app to:

- Submit your claims quickly and securely on your smartphone
- Access your Pay-Direct Card for immediate processing of prescription drug claims



Once you've had a claim processed, you can also register online on your insurer's website to check your claim's status and to set up direct deposit.

## Save more money!

- **Your Plan Coverage**  
You're covered for the insured portion of your Plan regardless of the health-care practitioner you choose.
- **Studentcare Networks**  
By consulting a Network member, you'll get additional coverage.

Example of a claim made using a Studentcare Dental Network practitioner:



## Exclusive savings from Network Partners

**LASIK MD**  
VICTORIA

**\$50 off**  
per eye on Standard LASIK\*

**\$100 off**  
per eye on Custom LASIK\*

\*Certain conditions apply.

**clearly**

With coupon code **STUDENT21**:

**10% off**  
contact lenses

**25% off**  
eyeglass frames  
(excluding certain brands)\*

\*Certain conditions apply.

**Rexall**

**10% off** prescription drugs  
(max \$40)\*

**20% off** select regularly priced  
Rexall brand non-prescription  
products\*

\*Certain conditions apply.

**Independent  
vision specialists**

**30% off**  
prescription eyeglasses,  
up to \$75

Discounts on eye exams  
and contact lenses

**\*} PSYVITALITI**

Preferred rates on  
50-minute adult therapy  
or coaching sessions

**and more!**

Dentists, physiotherapists,  
massage therapists, naturopaths,  
and chiropractors

**QUESTIONS?**  
[WWW.STUDENTCARE.CA/UWSA](http://WWW.STUDENTCARE.CA/UWSA)



LIVE CHAT AND  
WEB REQUEST FORM  
AVAILABLE



2021-2022

# Your UWSA Student Health & Dental Plan

## Make the most out of it

### Group Numbers

Health, vision, and dental: **Q1602** (Desjardins)  
Travel: **97180** (Blue Cross)

# All you need to know about your Plan

## What is a Health & Dental Plan?

- Extended health and dental coverage that can help fill gaps in provincial health care and other basic health-care programs
- Service provided by your students' alliance, the UWSA, and administered by Studentcare, the leading provider of student health and dental plans in Canada

## Who's covered?

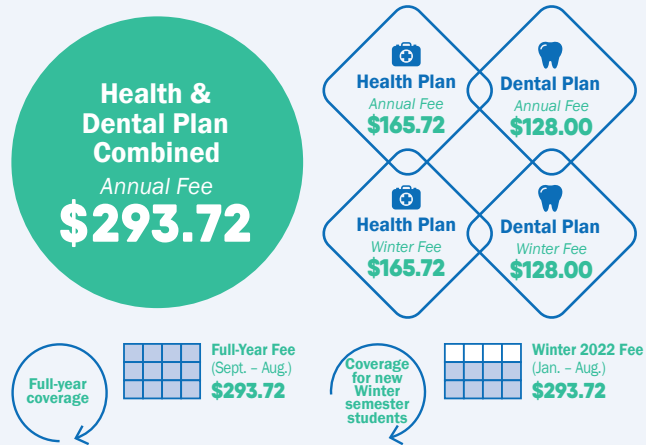
### Students automatically covered by the UWSA Health & Dental Plan:

Full-time undergraduate students who are registered in 4 or more courses during the Fall or Winter semester

Certain exceptions exist. Please check your student account to confirm if you've been charged the Plan fees.

Find out more at [www.studentcare.ca/uwsa](http://www.studentcare.ca/uwsa).

## How much does it cost?



If you're eligible, the Plan fee for coverage from Sept. 1 - Aug. 31 (or from Jan. 1 - Aug. 31 for new Winter semester students) will be automatically included in your tuition and other fees. Find more details online.

## What are my Group Numbers?

Health, vision, and dental: **Q1602** (insured by Desjardins Insurance)

Travel: **97180** (administered by Blue Cross Life Insurance Company of Canada)

## What is my Certificate Number?

Your Certificate Number is your 9-digit Student ID number, the same number used for claiming.

# Health & Dental Plan benefits

## Health Over \$10,000

	Per Visit/Purchase	Per Policy Year
<b>Prescription Drugs and Vaccinations</b> The dispensing fee is limited to \$8 per prescription or refill.	80%	<b>NEW!</b> <b>\$3,000</b>
<b>Psychologist/Social Worker/Registered Psychotherapist/Occupational Therapist</b>	80%	<b>NEW!</b> <b>\$800</b>
<b>Massage Therapist</b>	80%	<b>Combined maximum: \$1,000</b>
<b>Chiropractor</b>	80%	
<b>Physiotherapist/Physiatrist</b> Visits to a physiatrist require a referral from an MD.	80%	
<b>Chiropodist/Podiatrist</b>	80%	
<b>Naturopath</b>	80%	<b>Combined maximum: \$950</b>
<b>Osteopath</b>	80%	
<b>Speech Therapist</b>	80%	
<b>Acupuncturist</b>	80%	

**PLUS:** Orthotics, ambulance, hearing aids, medical equipment, and more

## Vision Over \$400

	Amount Covered	Eligible Every
<b>Eye Exam</b>	100%	24 months
<b>Eyeglasses and Contact Lenses</b>	\$225	24 months
<b>Medically Required Contact Lenses (following cataract surgery)</b>	\$200	24 months

**QUESTIONS?**  
[WWW.STUDENTCARE.CA/UWSA](http://WWW.STUDENTCARE.CA/UWSA)



Check online for updates related to COVID-19.

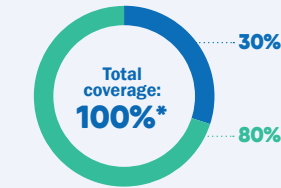
## Dental Up to \$1,000

- Insured portion
- Studentcare Dental Network savings

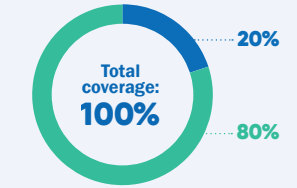
### Preventive Services

- Recall exams
- Cleanings
- X-rays

\*Total coverage cannot exceed 100%.

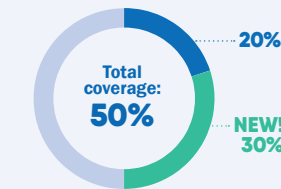


### Fillings/ Impacted Wisdom Teeth Extractions



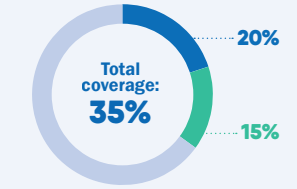
### Endodontics & Periodontics

- Root canals
- Gum treatments



### Major Restorative/ Denture Services

- Crowns
- Bridges
- Dentures



## Travel Up to \$5,000,000

	Amount Covered	Eligible
<b>Care Abroad</b> Includes coverage for the duration of a student exchange/internship	120 days	per trip
<b>Medical Incident</b> In case of a medical emergency Includes eligible COVID-19 medical expenses	\$5,000,000	per lifetime
<b>Trip Cancellation</b> Pre-paid, non-refundable trip expenses in case of a medical emergency or an eligible Travel Advisory	\$3,000	per trip
<b>Trip Interruption</b> In case of a medical emergency or an eligible Travel Advisory	\$7,500	per trip