

Exclusive Savings from Studentcare Network Partners

Your Plan Coverage
You're covered for the insured portion of your Plan regardless of which licensed health-care practitioner you choose.

Studentcare Networks
By consulting a Network member, you'll get additional coverage.

Example of a claim made using a Studentcare Dental Network practitioner:

70%

+ 30%

Total Coverage: Up to 100%

Save More with Network Members

LASIK MD
VISION

\$100 off Standard LASIK*
(\$50 off per eye)

\$200 off Custom LASIK*
(\$100 off per eye)

*Certain conditions apply.

Independent
Vision Specialists

30% off
prescription eyeglasses,
up to \$75

Discounts on eye exams
and contact lenses

Rexall

10% off prescription drugs
(max \$40)*

20% off select regularly priced
Rexall brand non-prescription products*

*Certain conditions apply.

PSYVITALITI

Preferred rates on
50-minute adult therapy
or coaching sessions

Discover more partners online!
Dentists, physiotherapists,
massage therapists, chiropractors,
and naturopaths

An Essential Service on Campus

As an eligible student, you're automatically covered by one of the most important services on campus, the MSA Student Health & Dental Plan. It covers many benefits not provided by provincial health-care programs.

Full-time Mohawk College students enrolled in programs requiring payment of ancillary fees to the MSA in September, January, or May are eligible.

Certain exceptions exist. Please check your student account to confirm if you've been charged the Plan fees.

See www.studentcare.ca for more details.

Group Numbers

Health, vision, and dental: MHK
Travel: 97180

(Canadian Premier Life Insurance Company, which operates under the brand name Securian Canada, is the underwriter of these products.)

Questions? Contact Us

www.studentcare.ca



Scan the QR code for more details on your Plan.

New claims submission process

Along with the Plan insurer, the claiming process is changing as of fall 2023. Visit www.studentcare.ca for detailed claims submission instructions.



OUR ENVIRONMENTAL COMMITMENT ON PAPER

This document contains 100% post-consumer fibre, Certified EcoLogo, Processed Chlorine Free, and FSC® Certified Recycled. Manufactured using biogas energy.

FULL-TIME
STUDENTS
AUTOMATICALLY
COVERED



Make the most out of it

2023-2024

Your MSA Student Health & Dental Plan

NEW! Insurer &
Group Numbers

Securian Canada
Health, vision, and dental: MHK
Travel: 97180

STUDENTCARE_BRO_MSA_09-23

Providing Quality Coverage

Health Plan

 **Health**
Over \$10,000

Prescription drugs
Psychologists
Massage therapists
Physiotherapists

Chiropractors
Ambulance
and more!

 **Vision**
Up to \$350

Eye exam
Eyeglasses and contact lenses
Laser eye surgery

Travel Plan

 **Care Abroad**
Up to \$5,000,000

120 days per trip, up to \$5,000,000 per lifetime (includes eligible COVID-19 medical expenses), trip cancellation and trip interruption in the event of a medical emergency or an eligible Travel Advisory

For a complete description of your coverage, visit www.studentcare.ca.



**What are you waiting for?
Make the most out of it!**

Dental Plan

 **Dental**
Up to \$750

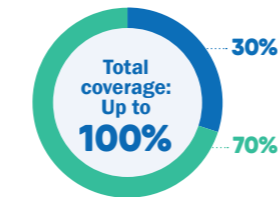
Checkups
Fillings
Cleanings

Root canals
and more!

 Insured Portion  Studentcare Dental Network Savings

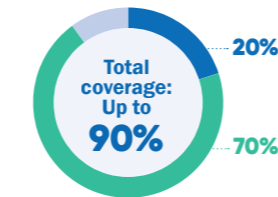
Preventive Services

- Recall exams
- Cleanings



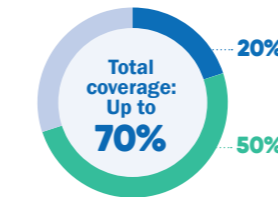
Basic Services

- Fillings



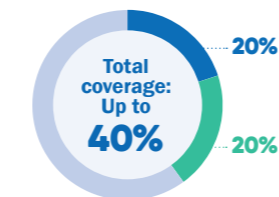
Preventive/Basic Services

- Impacted wisdom tooth extractions



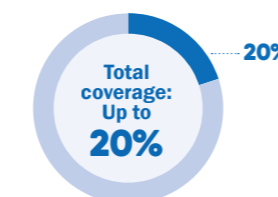
Basic Services

- Oral surgery
- Endodontics (root canals)
- Periodontics (gum treatments)



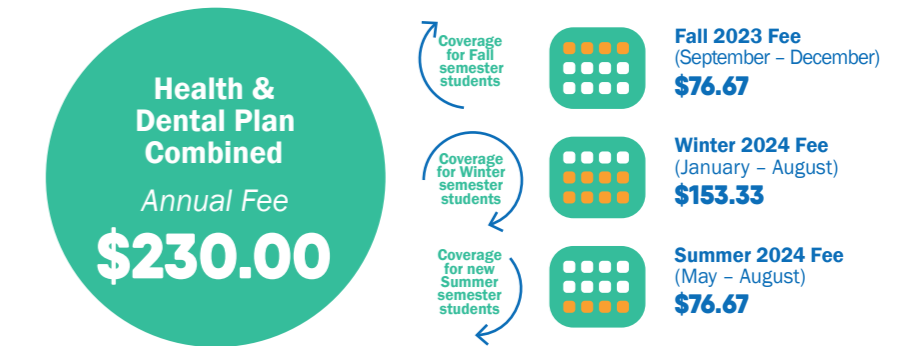
Major Restorative

- Crowns
- Bridges
- Posts



At a Great Price

Check it out!



Change-of-Coverage Periods

 **Fall semester:**
Sept. 7 – 29, 2023

 **Summer semester**
(new students only):
May 6 – 21, 2024

Winter semester
(new students only):
Jan. 8 – 19, 2024

If you're automatically covered, **the Plan fee is included in your tuition and other fees.** During the applicable period above, you can opt out of the Plan if you have proof of other coverage or enrol your family. Some students may also be eligible to enrol themselves in the Plan. See www.studentcare.ca for instructions.

Introduce Me to Your Family

Enrol loved ones for less

You can enrol your family (spouse and/or dependent children) each year by paying an additional fee, over and above your fee as a member of the Plan. Common law couples are eligible. Visit www.studentcare.ca for instructions.

 Add one dependant for
\$230.00
for full-year coverage*

 Add unlimited dependants for
\$460.00
for full-year coverage*

*Family enrolment fees for coverage from Jan. 1 – Aug. 31, 2024 (for new Winter semester students) and from May 1 – Aug. 31, 2024 (for new Summer semester students) are available online.

Plus: more services designed to support students

Mental Health & Wellness

Conversation

Powered by **Dialogue**

Fast access to mental health professionals with no out-of-pocket cost, offering consultations until remission

For eligibility details, see www.studentcare.ca.

Virtual Health Care

HI

Powered by **Dialogue**

Virtual health care that connects you with nurses and physicians from anywhere in Canada